



Style Guide

Font Families

Lobster Two

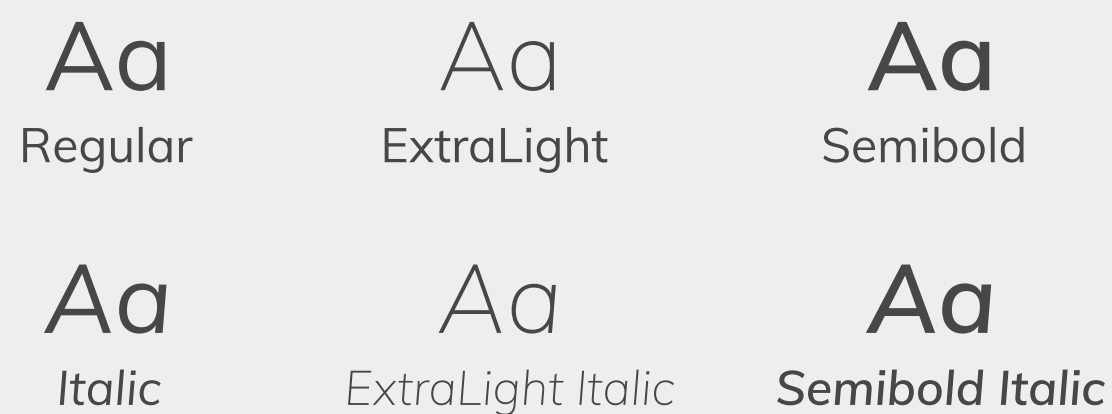
This font is only to be used for the brand name.

heirloom

6% letter spacing

Muli

This font is to be used for all text other than the brand name when being used as a logo. When it is unavailable, a sans-serif font should be the default.



Typography

Header 1 - 80pt

Header 2 - 64pt

Header 3 - 52pt

Header 4 - 42pt

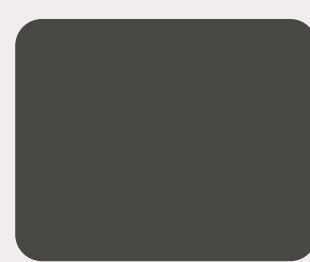
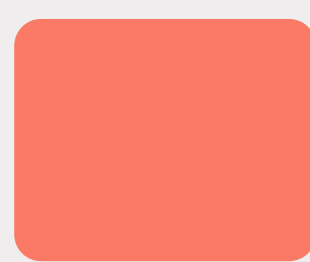
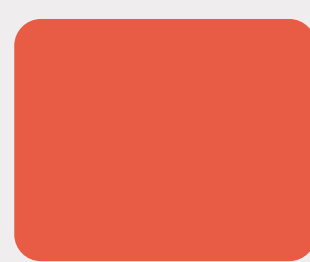
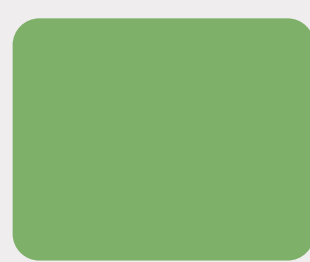
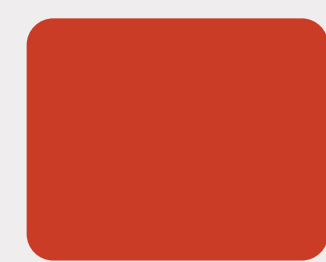
Header 5 - 34pt

Header 6 - 20pt

Color Palette

Primary

Secondary



dark red
#CA3C25

green
#7FB069

rose
#E85B45

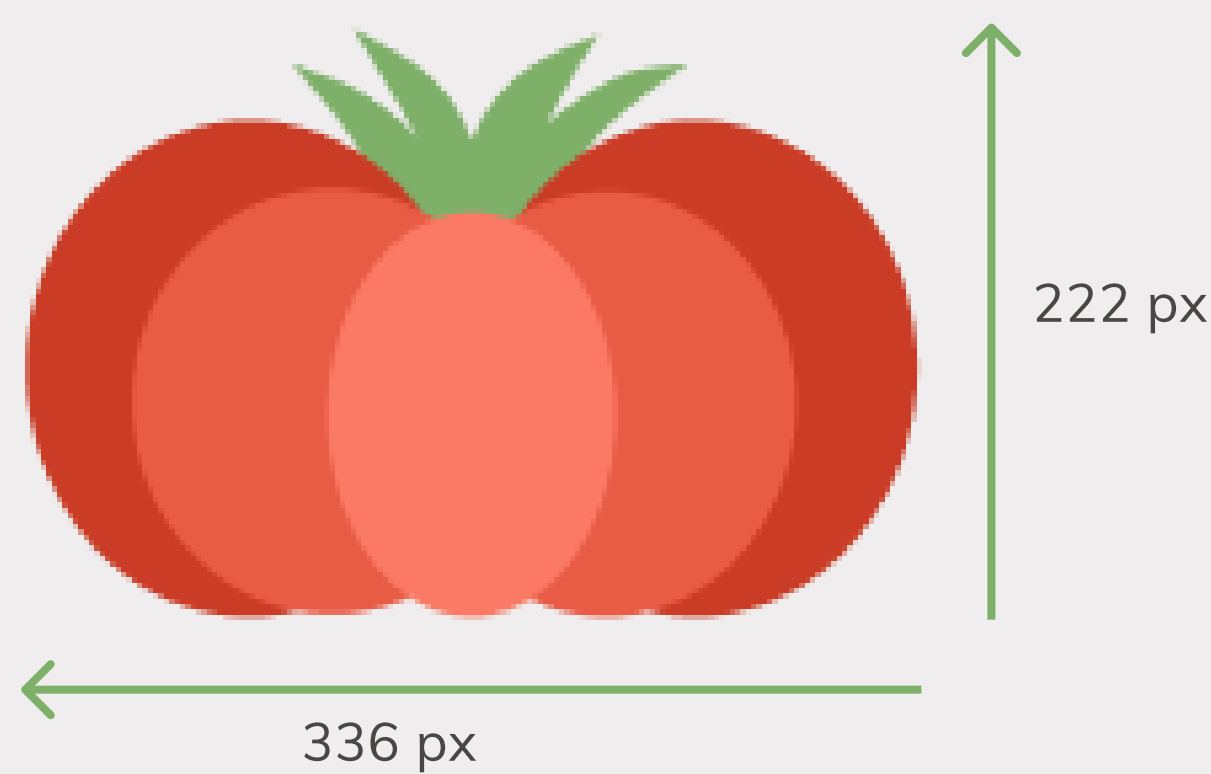
light pink
#FB7A65

gray
#474846

light gray
#EFEDED

Logos

Max Logo Size



Proportions on the logo must remain the same.

Favicon (16x16px)

Logo Styles

logo with text



Use this logo as primary logo on website.

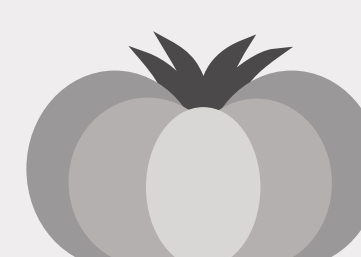
logo without text



Use this logo when not being used as brand icon on website.



grayscale with text



grayscale without text

Buttons



Use this button when there is a forward action such as Next, Add, Save or Sign Up.

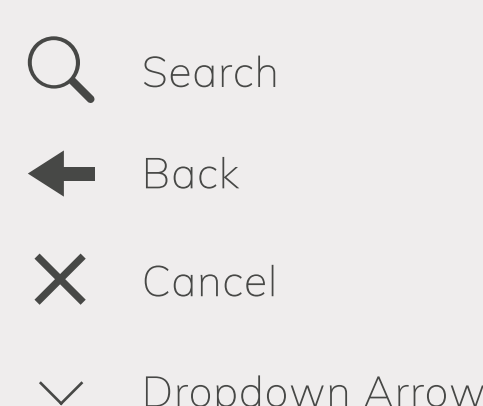
Use this button when an additional button is needed next to a primary button such as Log In.

Use this button to initiate a process like Add a recipe or Edit recipe.

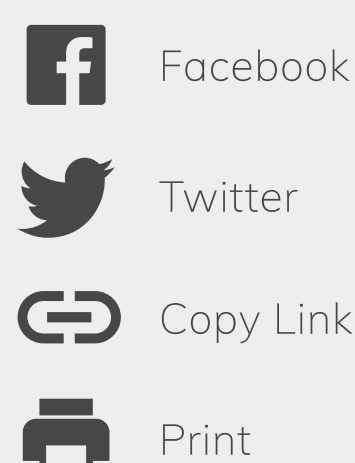
Use this button to change screens like View collection or recipe.

Iconography

Navigation



Share



Recipe



Miscellaneous

